



FRONT ELEVATION

SCALE: 1/4" = 1'-0"



BACK ELEVATION

SCALE: 1/4" = 1'-0"

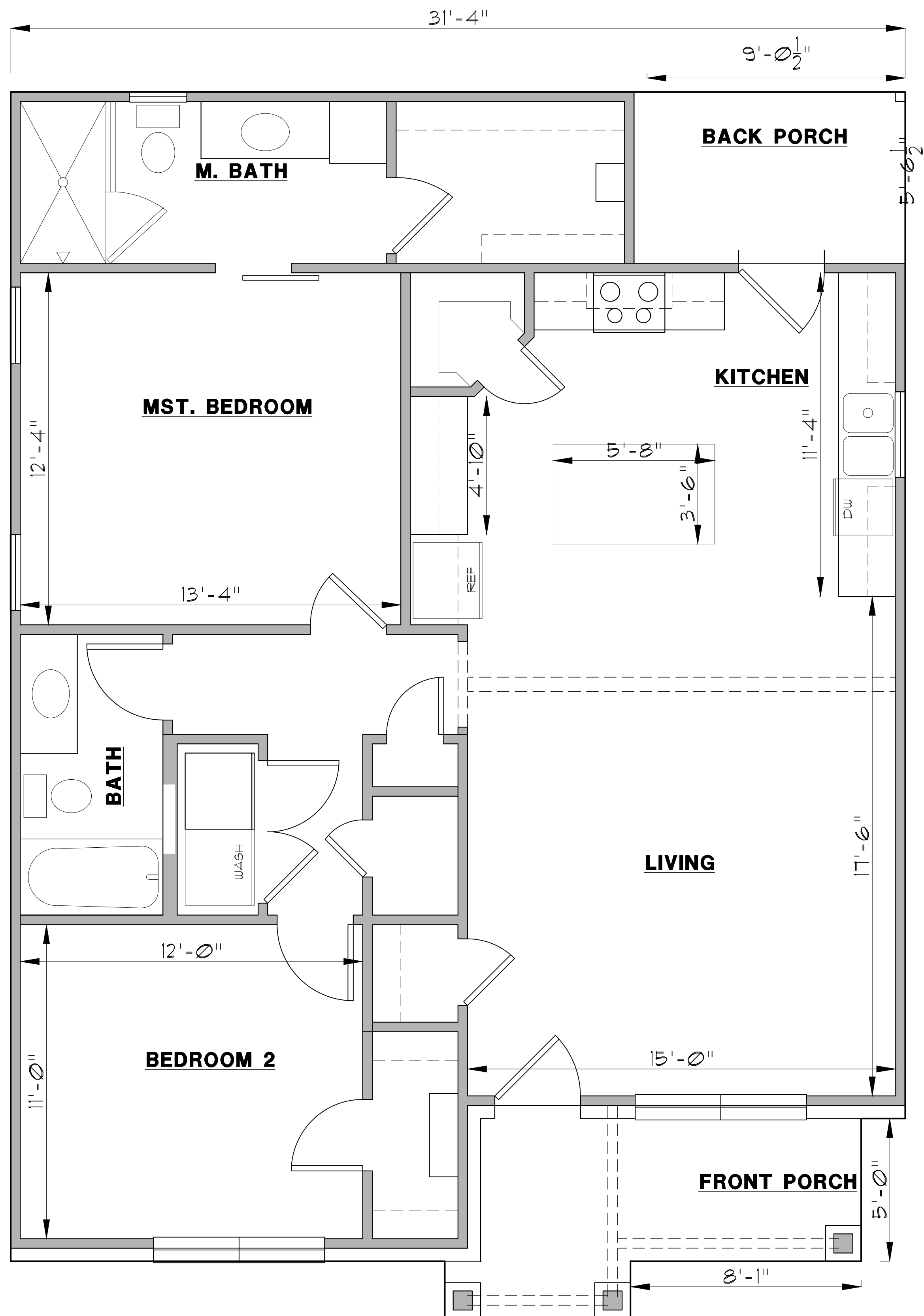
HOME DESIGNS

by
MARCY

817-776-5024

AREA CALCULATIONS

FRAMED	1135 S.F.
BRICK LEDGE	17 S.F.
LIVING	1152 S.F.
F. PORCH	80 S.F.
B. PORCH	57 S.F.
TOTAL SLAB	1289 S.F.



HOME DESIGNS

by
MARCY

817-776-5024

AREA CALCULATIONS

FRAMED	1135 S.F.
BRICK LEDGE	17 S.F.
LIVING	1152 S.F.
F. PORCH	80 S.F.
B. PORCH	57 S.F.
TOTAL SLAB	1289 S.F.