

FRONT ELEVATION

SCALE: 1/4" = 1'-0"



BACK ELEVATION

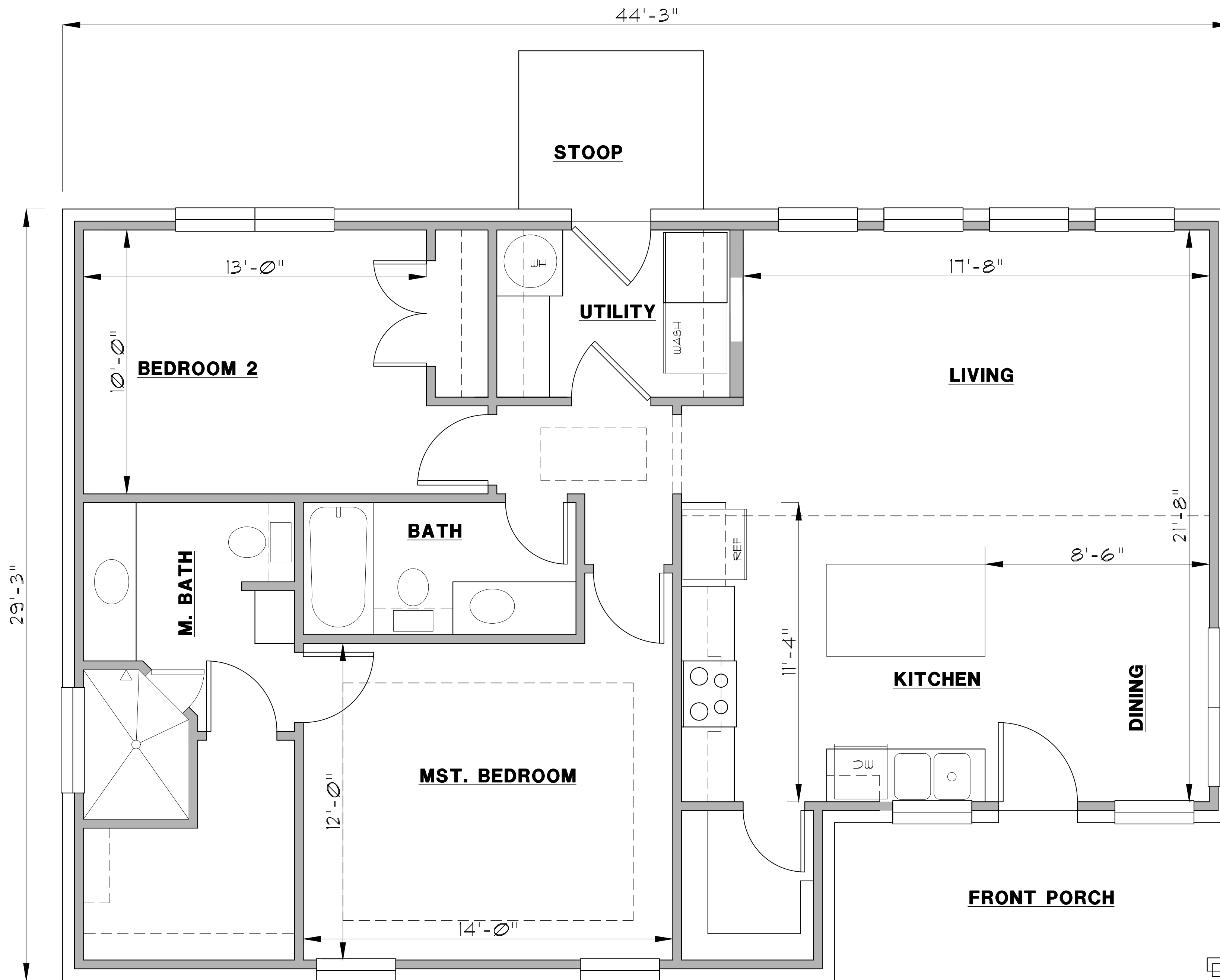
SCALE: 1/4" = 1'-0"

HOME DESIGNS

by
MARCY

817-776-5024

| | |
|-------------|-----------|
| FRAMED | 1138 S.F. |
| BRICK LEDGE | 66 S.F. |
| LIVING | 1204 S.F. |
| F. PORCH | 90 S.F. |
| STOOP | 42 S.F. |
| TOTAL SLAB | 1336 S.F. |



HOME DESIGNS

by
MARCY

817-776-5024

| | |
|-------------------|------------------|
| FRAMED | 1138 S.F. |
| BRICK LEDGE | 66 S.F. |
| LIVING | 1204 S.F. |
| F. PORCH | 90 S.F. |
| STOOP | 42 S.F. |
| TOTAL SLAB | 1336 S.F. |