



FRONT ELEVATION

SCALE: 1/4" = 1'-0"



BACK ELEVATION

SCALE: 1/4" = 1'-0"

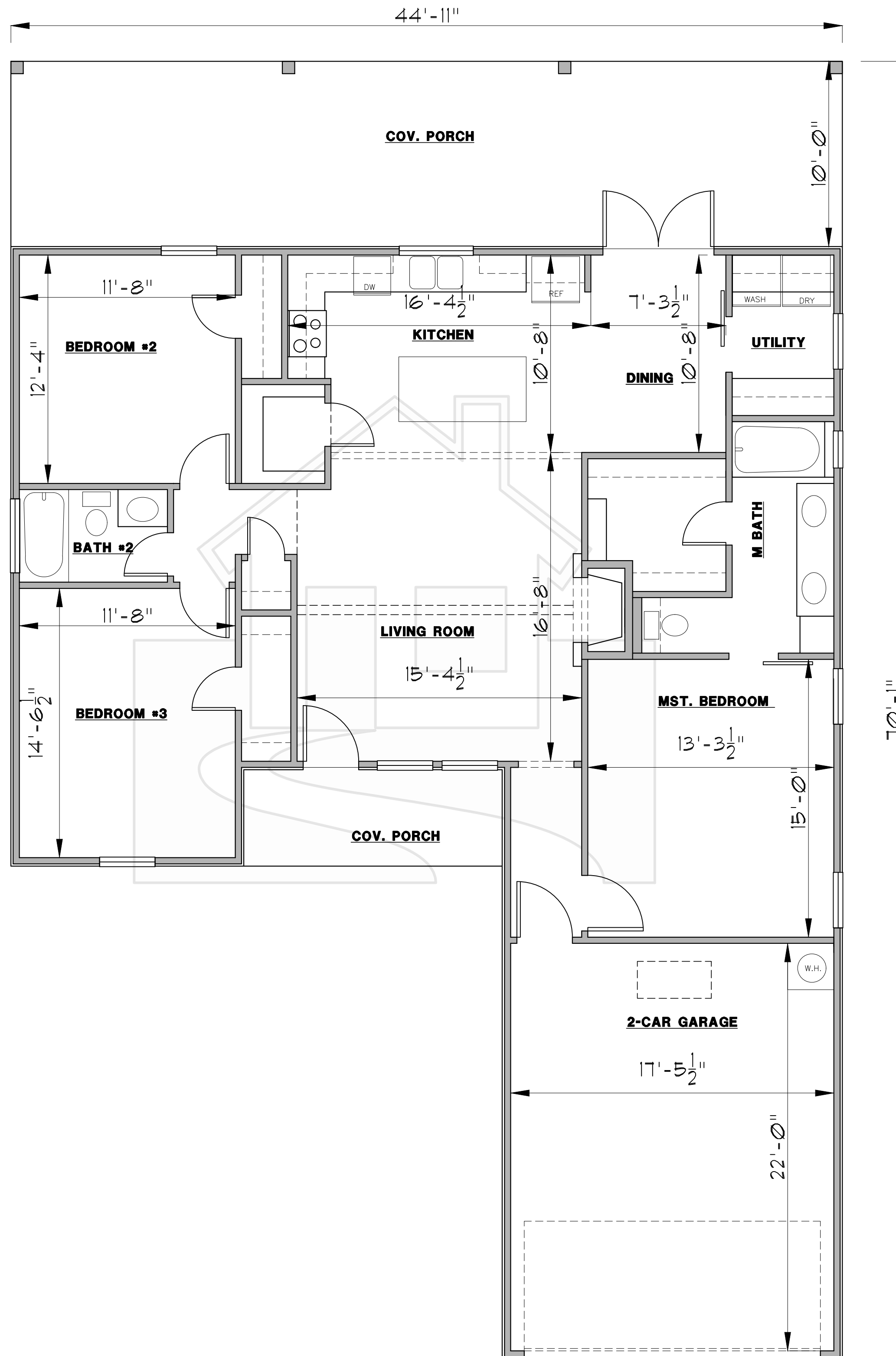
HOME DESIGNS

by
MARCY

817-776-5024

AREA CALCULATIONS

LIVING	1507 S.F.
F. PORCH	73 S.F.
B. PORCH	449 S.F.
GARAGE	413 S.F.
TOTAL SLAB	2442 S.F.



HOME DESIGNS

by
MARCY

817-776-5024

AREA CALCULATIONS

LIVING	1507 S.F.
F. PORCH	73 S.F.
B. PORCH	449 S.F.
GARAGE	413 S.F.
TOTAL SLAB	2442 S.F.