



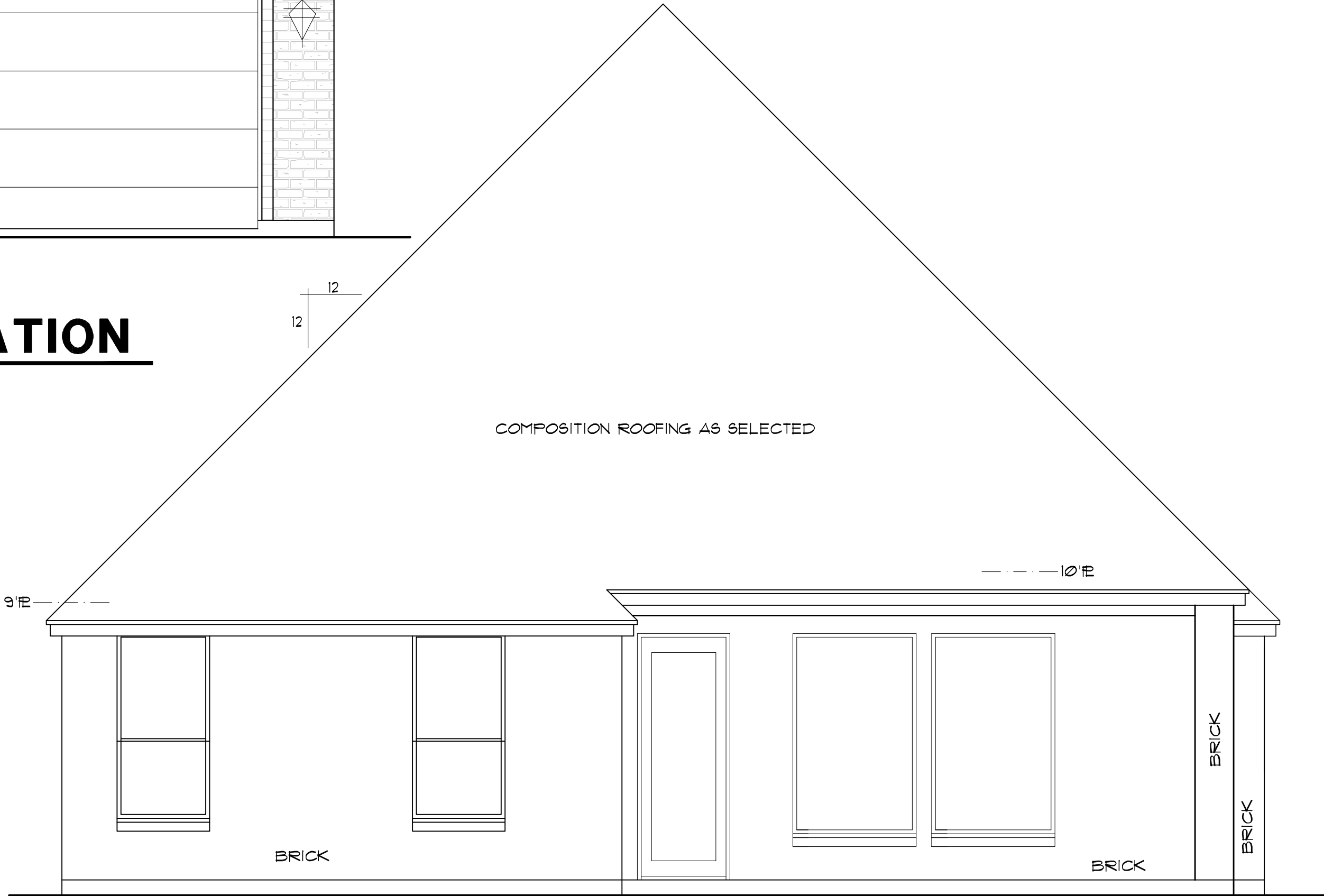
FRONT ELEVATION

SCALE: 1/4" = 1'-0"

HOME DESIGNS
by
MARCY

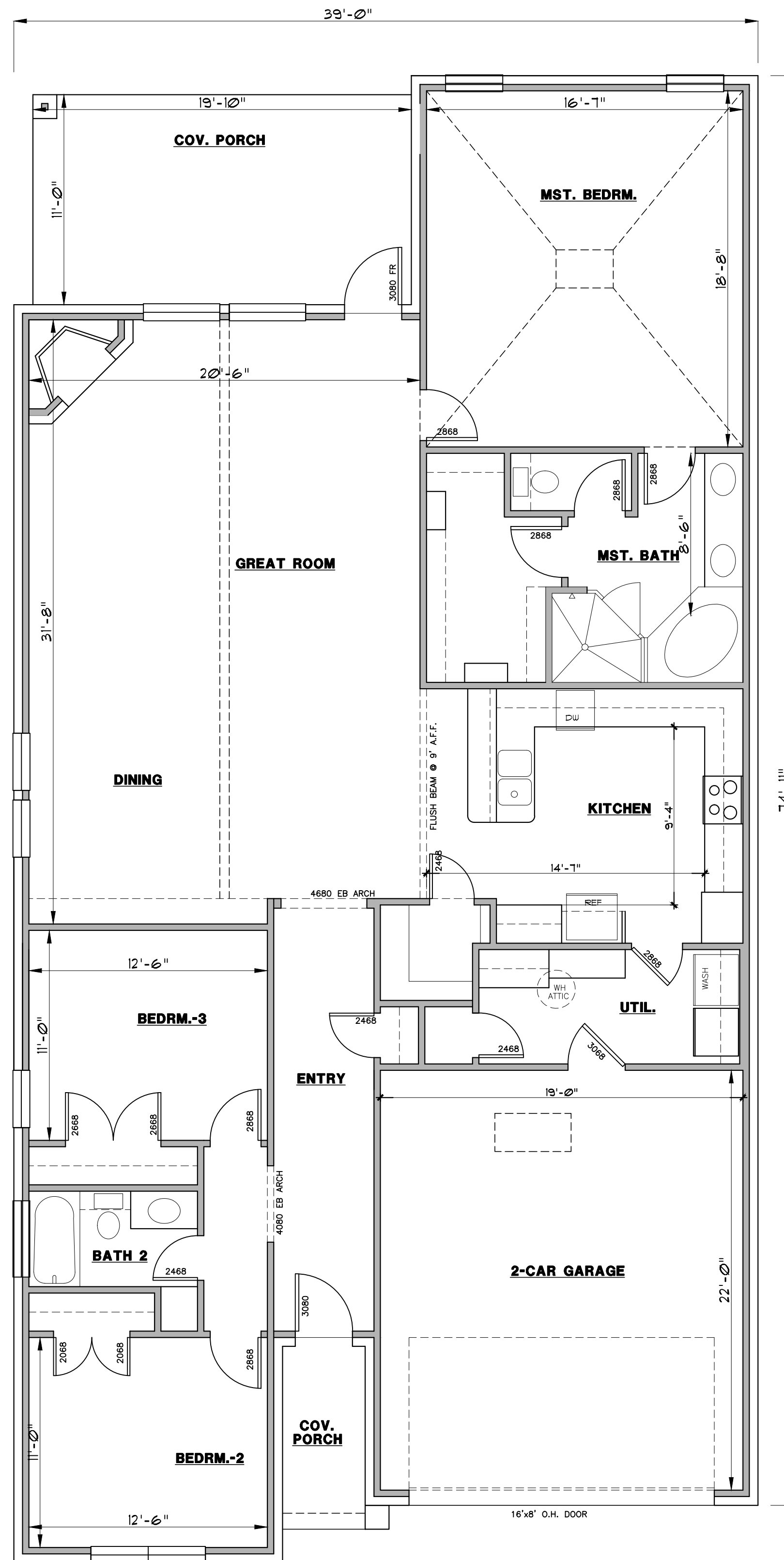
817-776-5024

LIVING	2230 S.F.
F. PORCH	35 S.F.
B. PORCH	229 S.F.
GARAGE	434 S.F.
BRICK LEDGE	23 S.F.
TOTAL SLAB	2951 S.F.



BACK ELEVATION

SCALE: 1/4" = 1'-0"



HOME DESIGNS

by
MARCY

817-776-5024

LIVING	2230 S.F.
F. PORCH	35 S.F.
B. PORCH	229 S.F.
GARAGE	434 S.F.
BRICK LEDGE	23 S.F.
TOTAL SLAB	2951 S.F.