



FRONT ELEVATION

SCALE: 1/4" = 1'-0"

HOME DESIGNS

by
MARCY

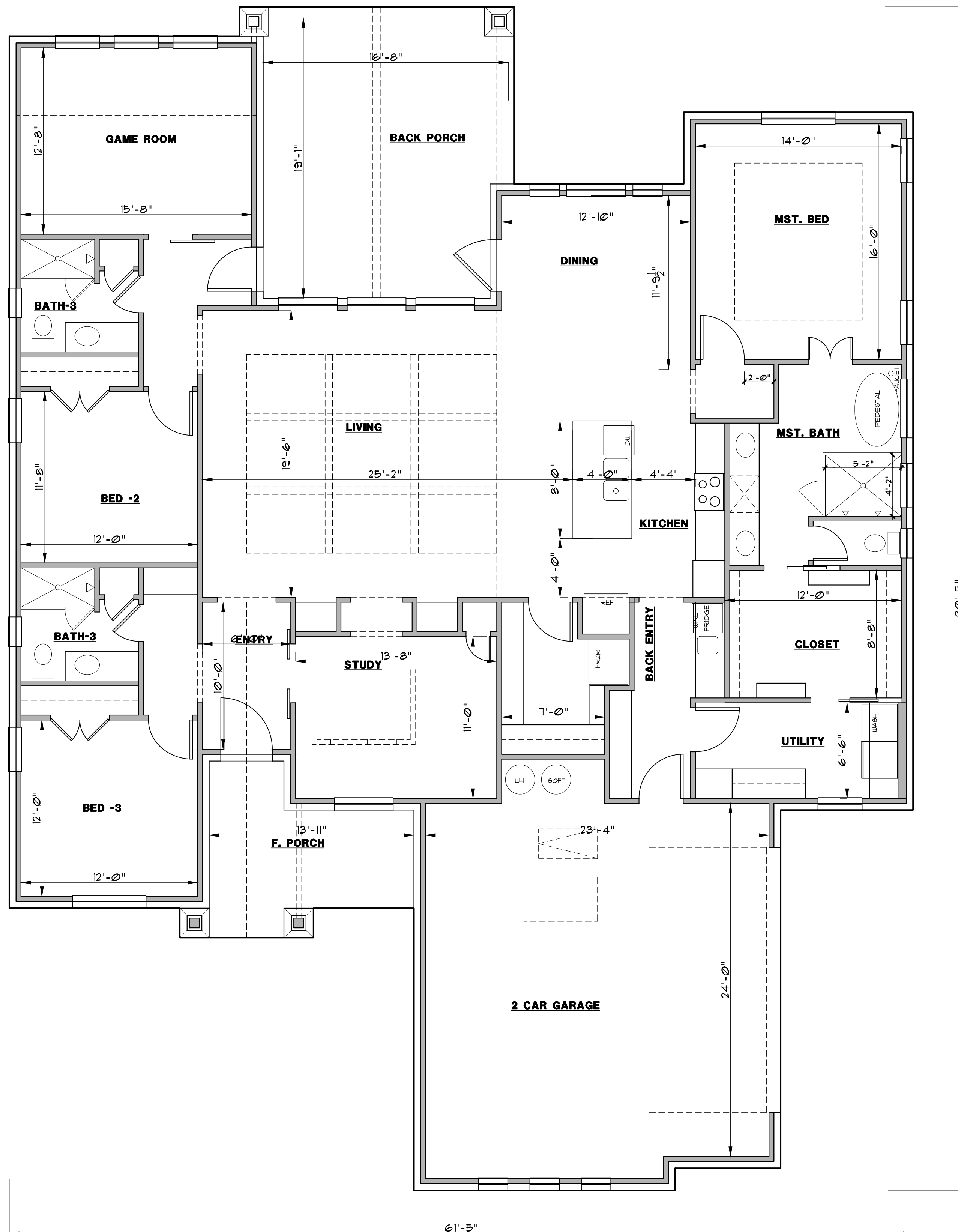
817-776-5024



BACK ELEVATION

SCALE: 1/4" = 1'-0"

FRAMED	2670 S.F.
BRICK LEDGE	113 S.F.
LIVING	2783 S.F.
F. PORCH	128 S.F.
B. PORCH	329 S.F.
GARAGE	665 S.F.
TOTAL SLAB	3905 S.F.



HOME DESIGNS

by
MARCY

817-776-5024

FRAMED	2670 S.F.
BRICK LEDGE	113 S.F.
LIVING	2783 S.F.
F. PORCH	128 S.F.
B. PORCH	329 S.F.
GARAGE	665 S.F.
TOTAL SLAB	3905 S.F.